

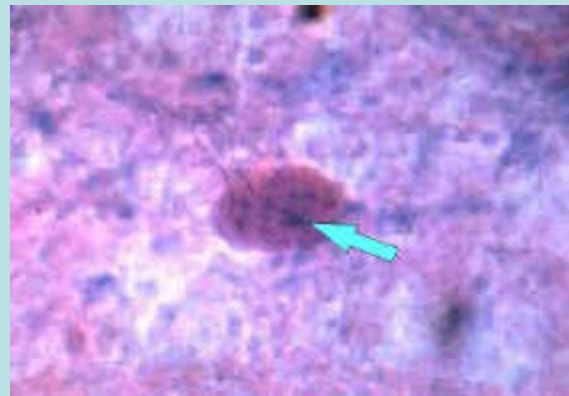
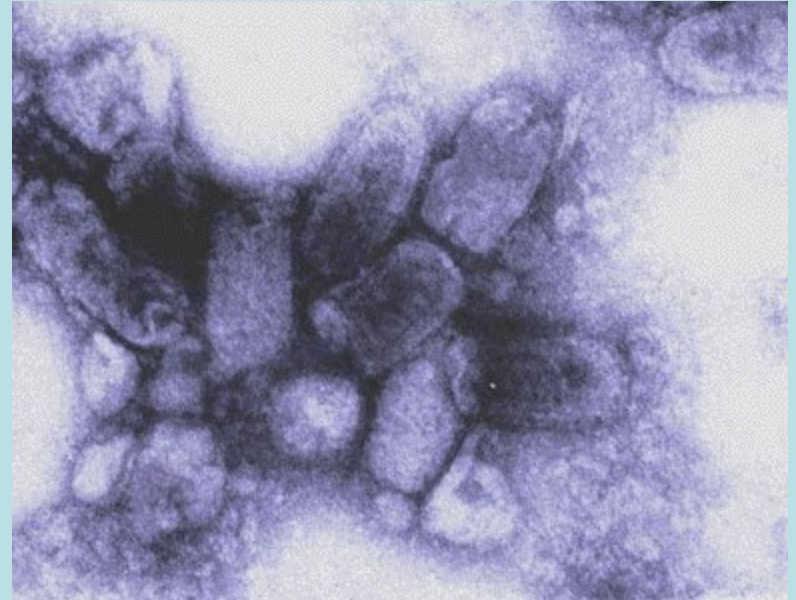


Rabies

Dr.Iresha Wickramasinghe

What is rabies ?

- Viral disease
- 100% fatal
- Affect any mammal
- A neurological disease



- The incubation period for the Rabies Virus is long and highly variable.
- It is determined by,
 - the concentration of the virus
 - the proximity of the wound to the brain
 - the severity of the wound
 - the host's age,
 - the host's immune status.

Sources- Sri Lanka

- Dog
- Cat
- Mongoose
- Bat
- Monkey
- Jackal

- Other: cattle, goat, sheep, horse, rodents etc.





Types of rabies

- **Furious**

- Aggressive
- Excessive salivation
- Unprovoked bites



- **Dumb**

- Lethargic
- Depressed
- Reject food
- Excessive salivation



Both the forms end up with paralysis, coma and death

Transmission

- From the bite of a rabid animal. There is a secretion of the virus in the saliva.
- Inhalation of the aerosolized virus,
- In transplanted infected tissue,
- Inoculation through intact mucosal membranes



If you are bitten....,

- Wash the area with soap and water



- *Immediately* seek medical care
- The animal should be confined and *observed for 10 days*
- If the suspected animal die, *the head should be submitted* to the laboratory for testing

Post exposure therapy

All individuals **should continue the treatments** unless the laboratory confirms the animal is negative for rabies

Serum will be infiltrated around the wound with severe bites or for risky areas

Do not take **vaccines unnecessarily**



Never....,

- Try to handle wild animals
- Handle animals showing the signs
- Ignore any bites- always seek medical advices

Should....,

- Proper vaccination of all the pet animals including wild animals
- If you pet is bitten by a wild animal or a stray immediately seek veterinary care
- Spay or neuter your pet animals for unwanted breeding
- People with occupational hazards should receive pre-exposure vaccination

Human rabies

Human Rabies in the World

Every 10 to 15 mins somebody dies of rabies in the world



In most instances a dog is at the origin of exposure

A thousand people receive rabies post-exposure treatment every hour in the world



Removing the head

- Protective cloths
- Properly pack in polythene and ice
- Deliver to laboratory as soon as possible



- 5600 billions/ year for Asian countries
- 3100 deaths/year due to rabies in Asia

According to WHO records

Remember....,

- Prevention is better than cure

